

1915 SAN DIEGO 1915
PANAMA-CALIFORNIA
EXPOSITION
SOUVENIR BOOK.

SAN DIEGO PANAMA- CALIFORNIA EXPOSITION.

High on a flower-decked mesa overlooking the mighty Pacific and looking back across fertile valleys to the snow-capped peaks of California and Mexico, eighteen miles away, stands San Diego's Exposition Beautiful.

Differing widely from the San Francisco fair, that at San Diego is a triumphant display of what man can do by utilizing to fullest advantage the wonderworks of Nature in southern California. No other section of the country is so blessed with winters which are balmy and summers which are cool—with twelve months of the year offering uninterrupted June. And nowhere else could such feats be performed as have marked the erection of the magic Spanish city of mission and cathedral and palace, where twentieth century bustle is forgotten and the seeker after beauty finds himself transported to the romance and grandeur of the Spain of three centuries ago.

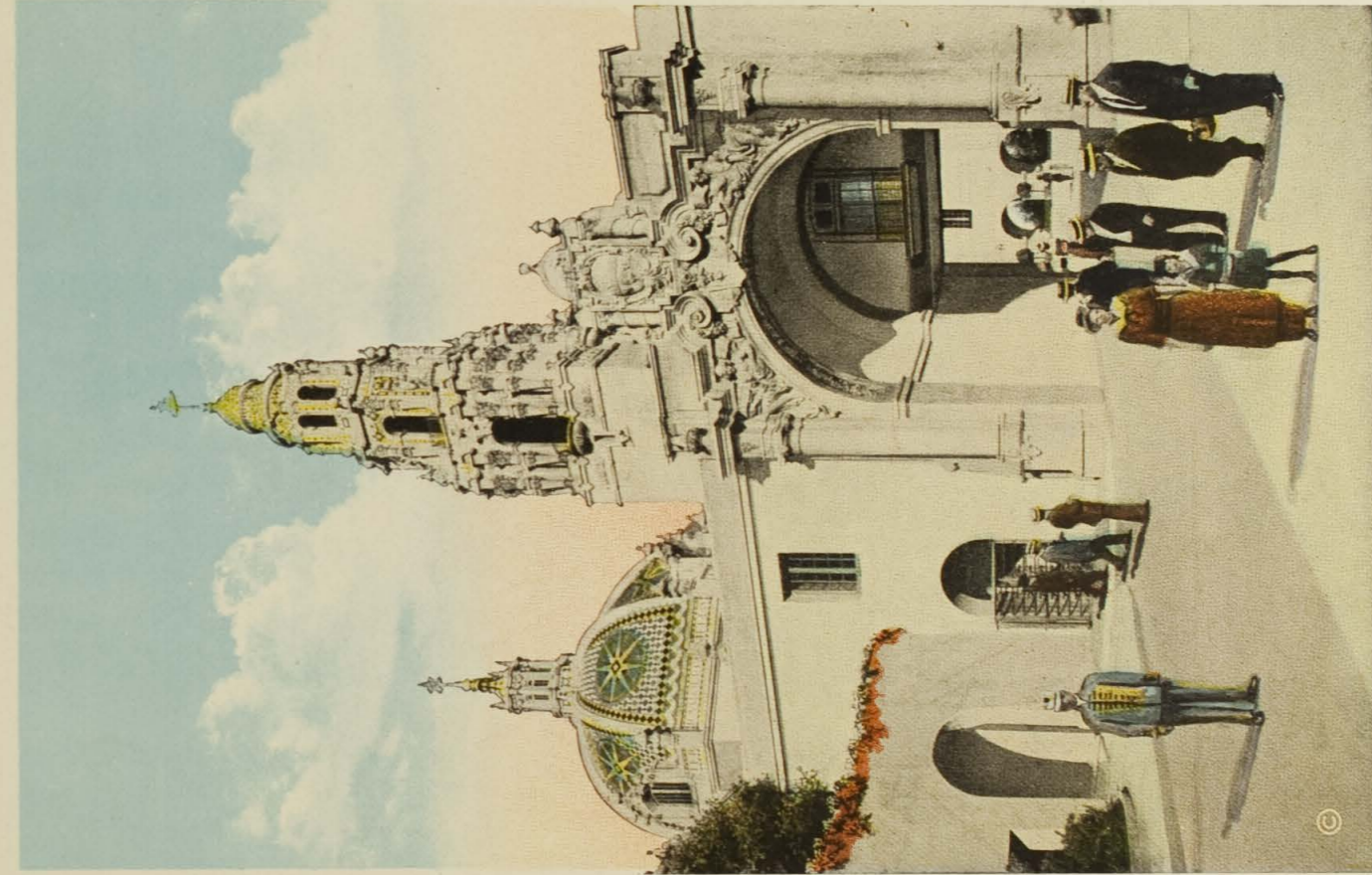
The quiet patios within the cloistered walls where mission bells hang, vibrate to the hum of guitar and mandolin, to the click of castanet, to the song of Caballero, to the tramp of Conquistadore and the measured tread of the procession of Padres. The broad Plaza where the pigeons swoop is the scene of the dances of Aragon and the fiestas of Spanish America and the ceremonials of the ancient red men.

The pergolas on the edge of the deep canyon command a view out across the Harbor of the Sun, past Fort Rosecrans, to the broad waters over which came Cabrillo, the discoverer, in 1542, reaching the port where was to be started the first white settlement on the Pacific coast of what is now United States territory, the same port which is the first port of call north of the Panama canal—San Diego.

The rare old traditions of the Spanish days vitalize the whole Exposition which celebrates the opening of the canal, from "New Year's to New Year's, throughout 1915."



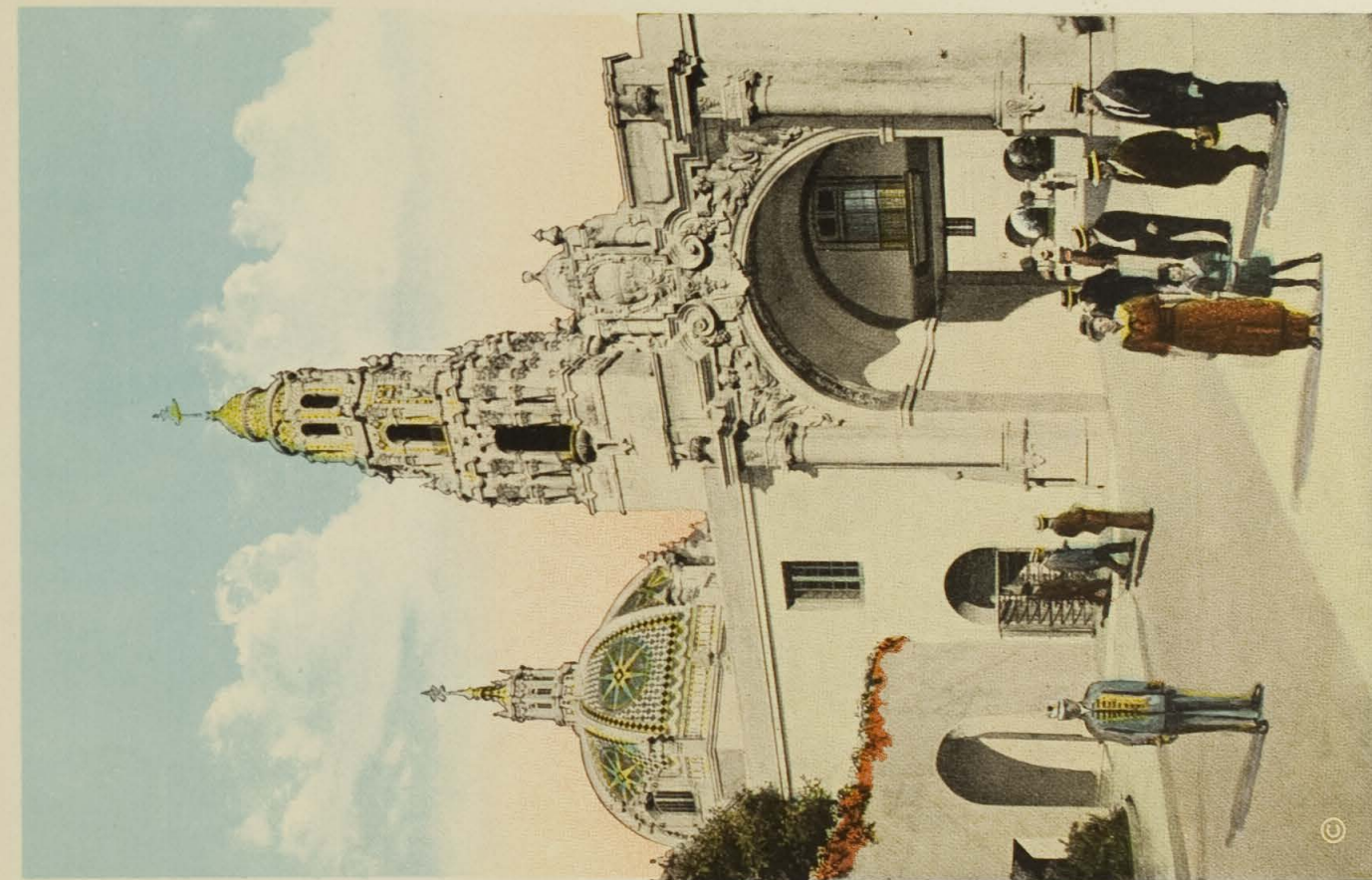
General View of the Exposition Grounds from the Arizona Cactus Garden just North of Cabrillo Bridge.



West Entrance to Exposition Grounds, showing sculptural detail of Gate and California Dome and Tower in the background.



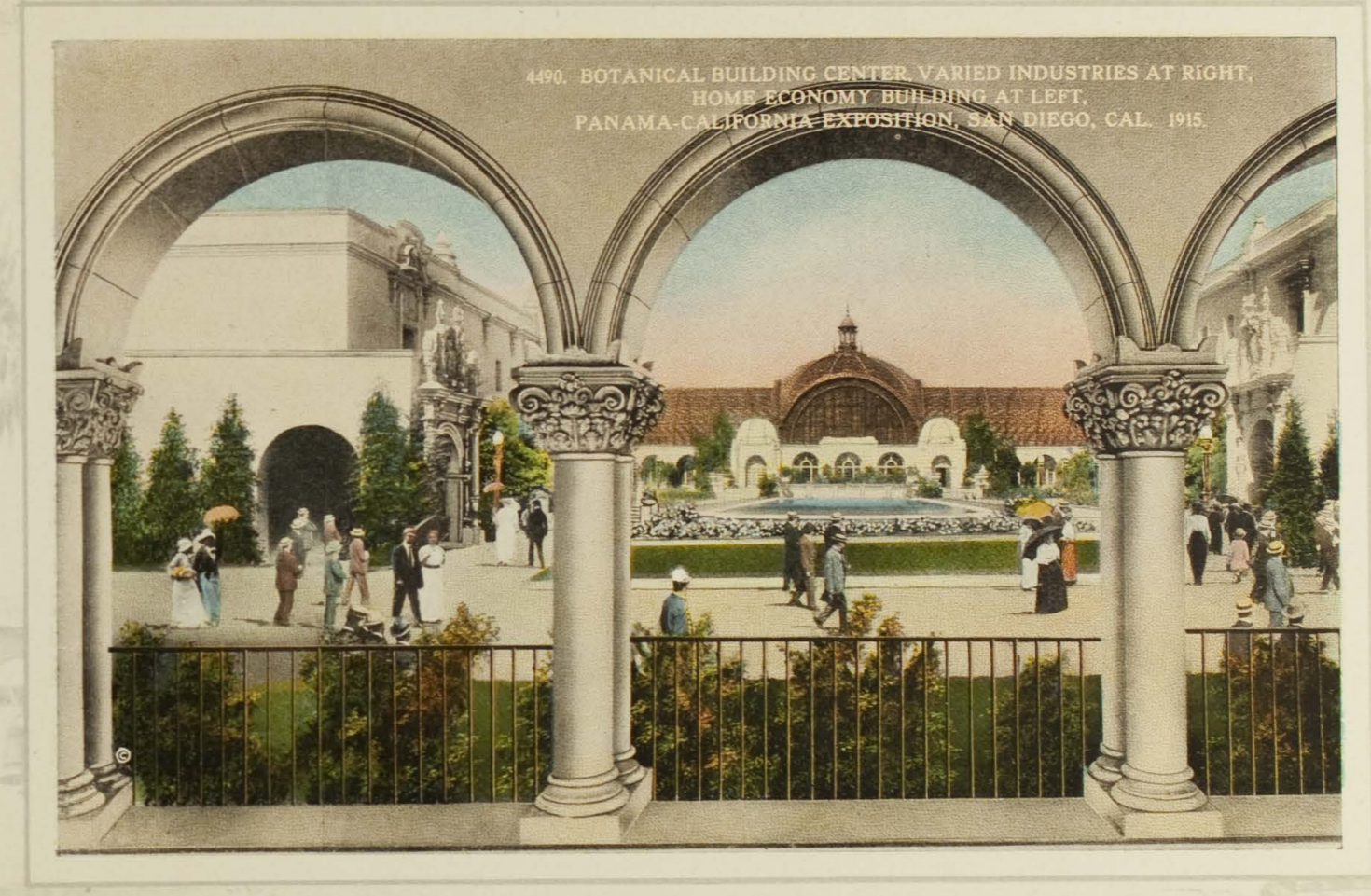
General View of the Exposition Grounds from the Arizona Cactus Garden just North of Cabrillo Bridge.



West Entrance to Exposition Grounds, showing sculptural detail of Gate and California Dome and Tower in the background.



The Court in front of the Botanical Building, one of the many beauty spots on the grounds.



The Botanical Building, from the Arches showing the Varied Industries at the right and the Home Economy at the left.



View of Prado side of the Varied Industries Building.



General View of the Prado from the West Gate, Science and Education Building at the left, Arts and Crafts at the right.



View of Prado side of the Varied Industries Building.



General View of the Prado from the West Gate, Science and Education Building at the left, Arts and Crafts at the right.

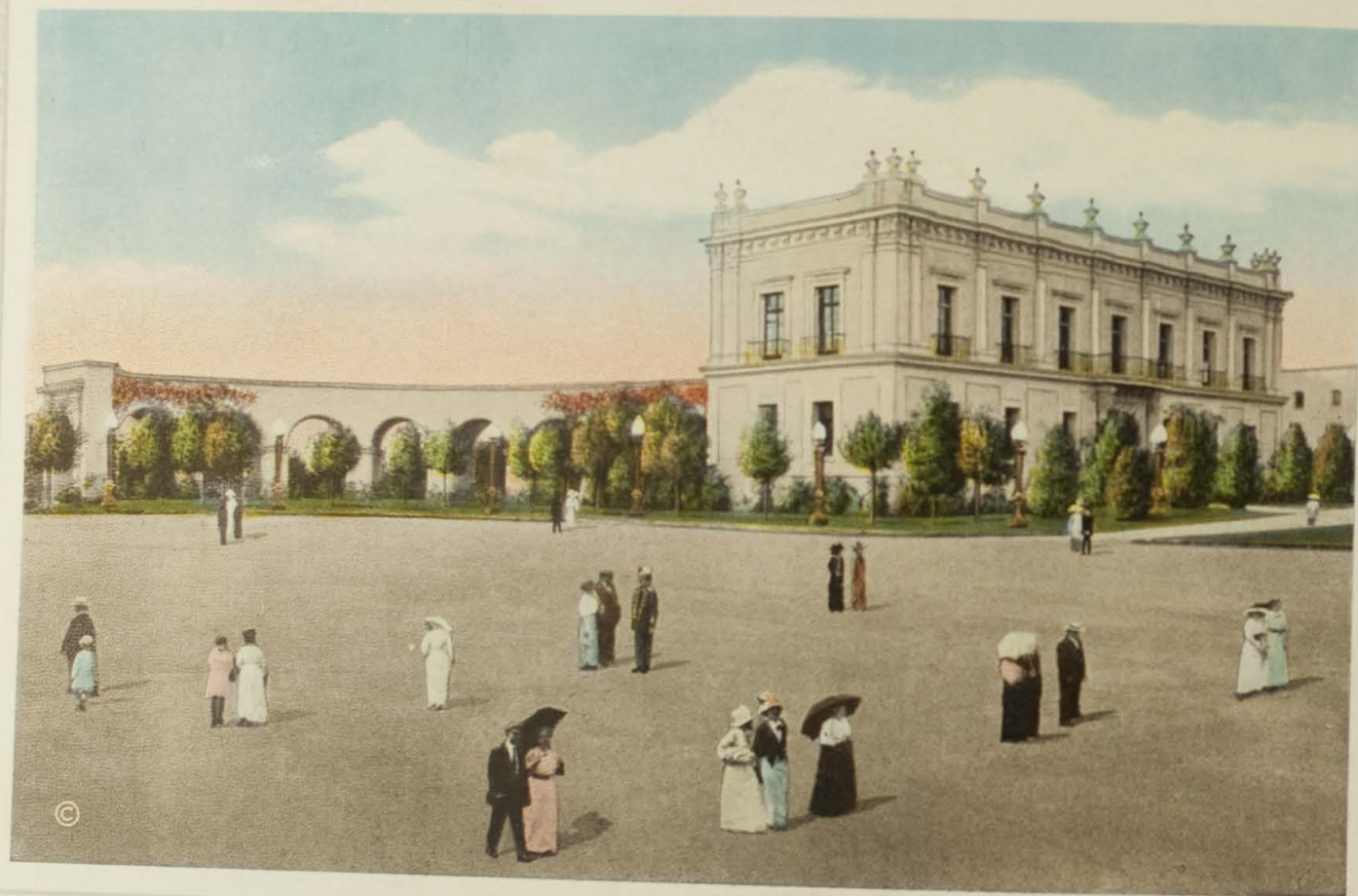


4435 ARTS AND CRAFTS THROUGH LOWER PERGOLA,
PANAMA-CALIFORNIA EXPOSITION, SAN DIEGO, CAL. 1915.

Arts and Crafts Tower as viewed through the Lower Pergola.



Lily Pond, between Main Entrance to the Botanical Building.



Kern and Tulare Counties Building, as seen from Music Pavilion Plaza.



4488. FRAY JUNIPERO SERRA TABLET
ON VARIOUS INDUSTRIES BUILDING,
PANAMA-CALIFORNIA EXPOSITION, SAN DIEGO, CAL. 1915.

Father Serra Tablet on West Wall of Varied Industries Building.
Dedication Mark.



One of two Main Entrances to Botanical Building, showing Vases.



View West from Plaza de Panama, showing West Gate and California Building in background.



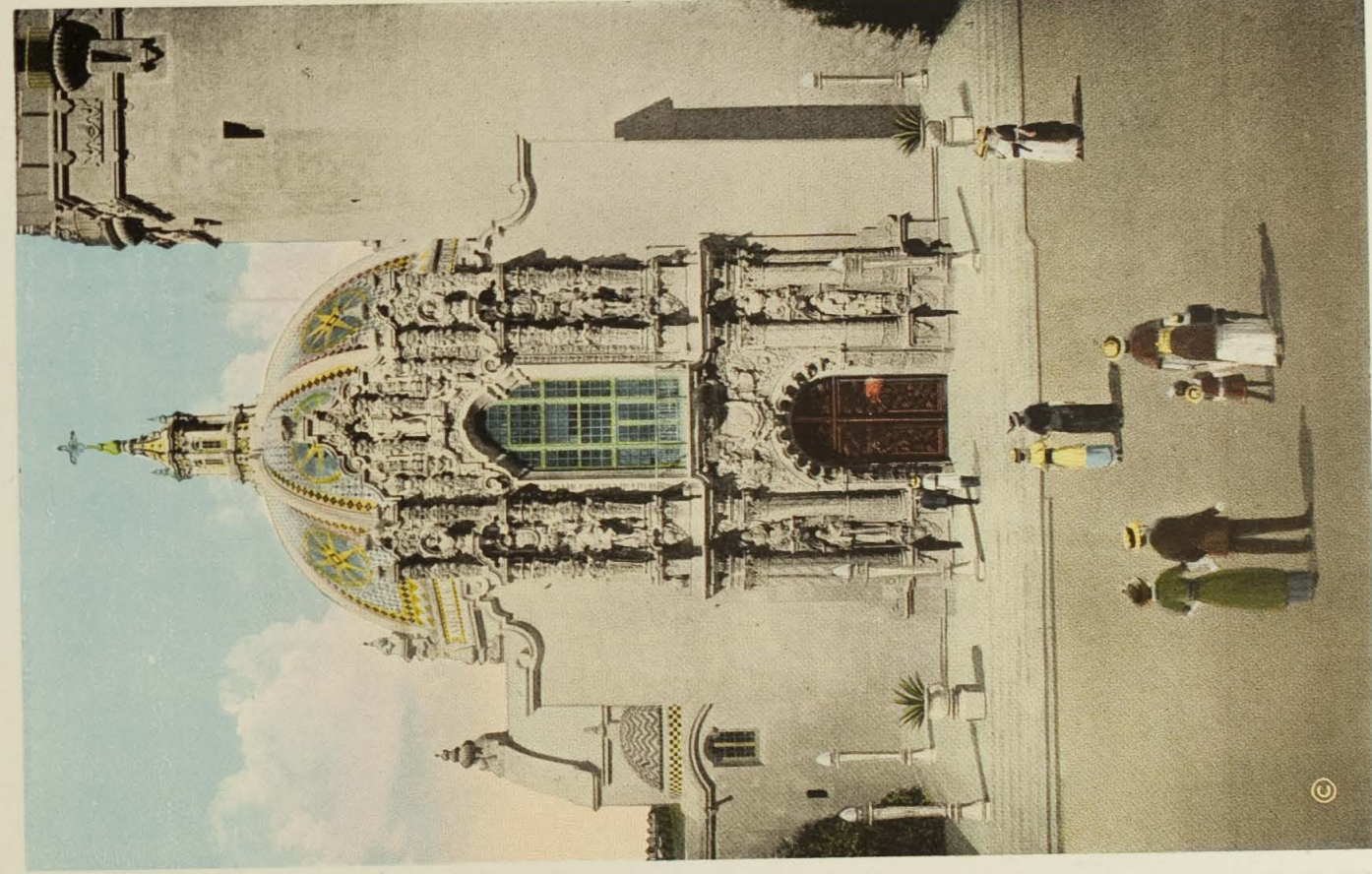
San Juan Valley Counties Building, South of the
Plaza de Panama.



Foreign and Domestic Arts Building on the Southeast corner of Prado
and Plaza de Panama.



California Building, permanent concrete construction.



Entrance to California Building showing Statuary of the Historical Characters of early San Diego.



Reflections in Large Lagoon. View looking South from Upper Lagoon.



Bird's-eye View of the Exposition East from the California Tower.



General View of the Exposition Grounds taken from Roller Coaster.



Glimpse of the Formal Gardens through the Square Gateway at the West End.
Arts and Crafts Building in background.



Formal Gardens with Southern California Counties Building
in background.



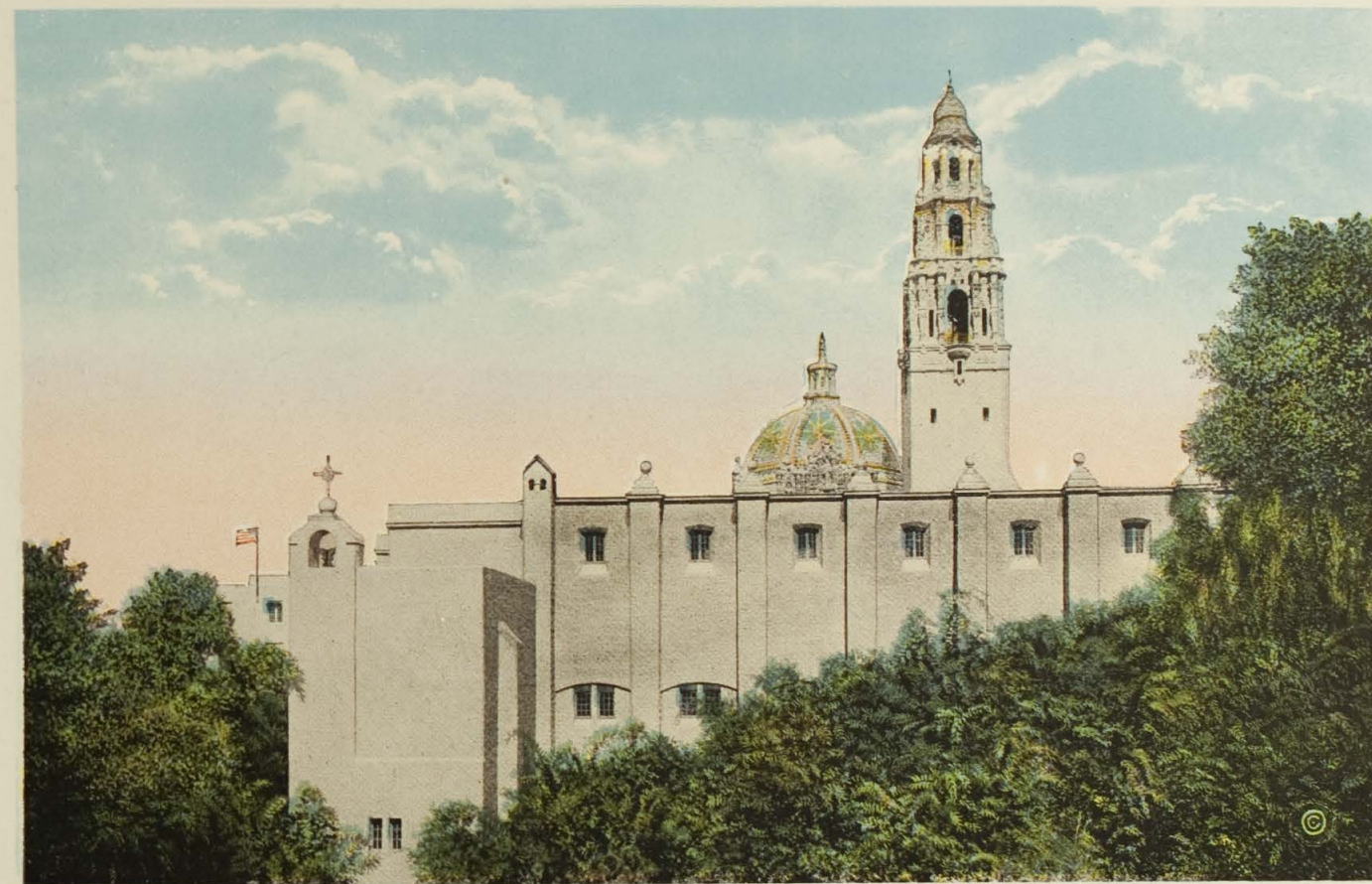
© 4439. PUENTE CABRILLO THROUGH LOWER PERGOLA,
PANAMA-CALIFORNIA EXPOSITION, SAN DIEGO, CAL. 1915.

Puente Cabrillo, West Entrance to the Exposition, View from Lower Pergola.



© 4472. VIEW IN BOTANICAL BUILDING,
PANAMA-CALIFORNIA EXPOSITION, SAN DIEGO, CAL., 1915.

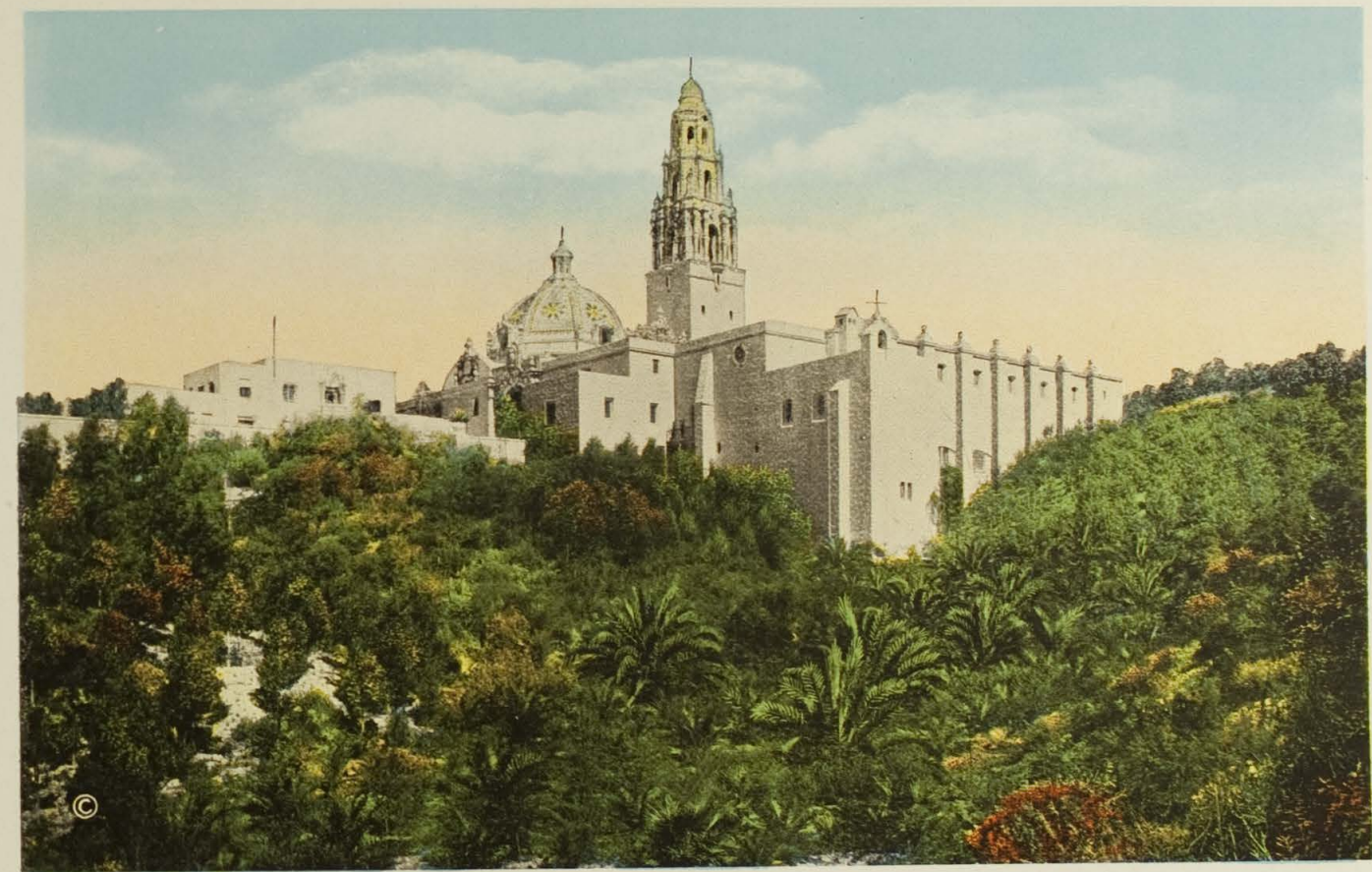
View of Pool in Botanical Building Hot House.



South Side of Ethnological Building, showing California Towers
in background.



East Entrance to Varied Industries Building, opening off Calle Cristobal.



Ethnology and California Buildings from Cabrillo Canyon.



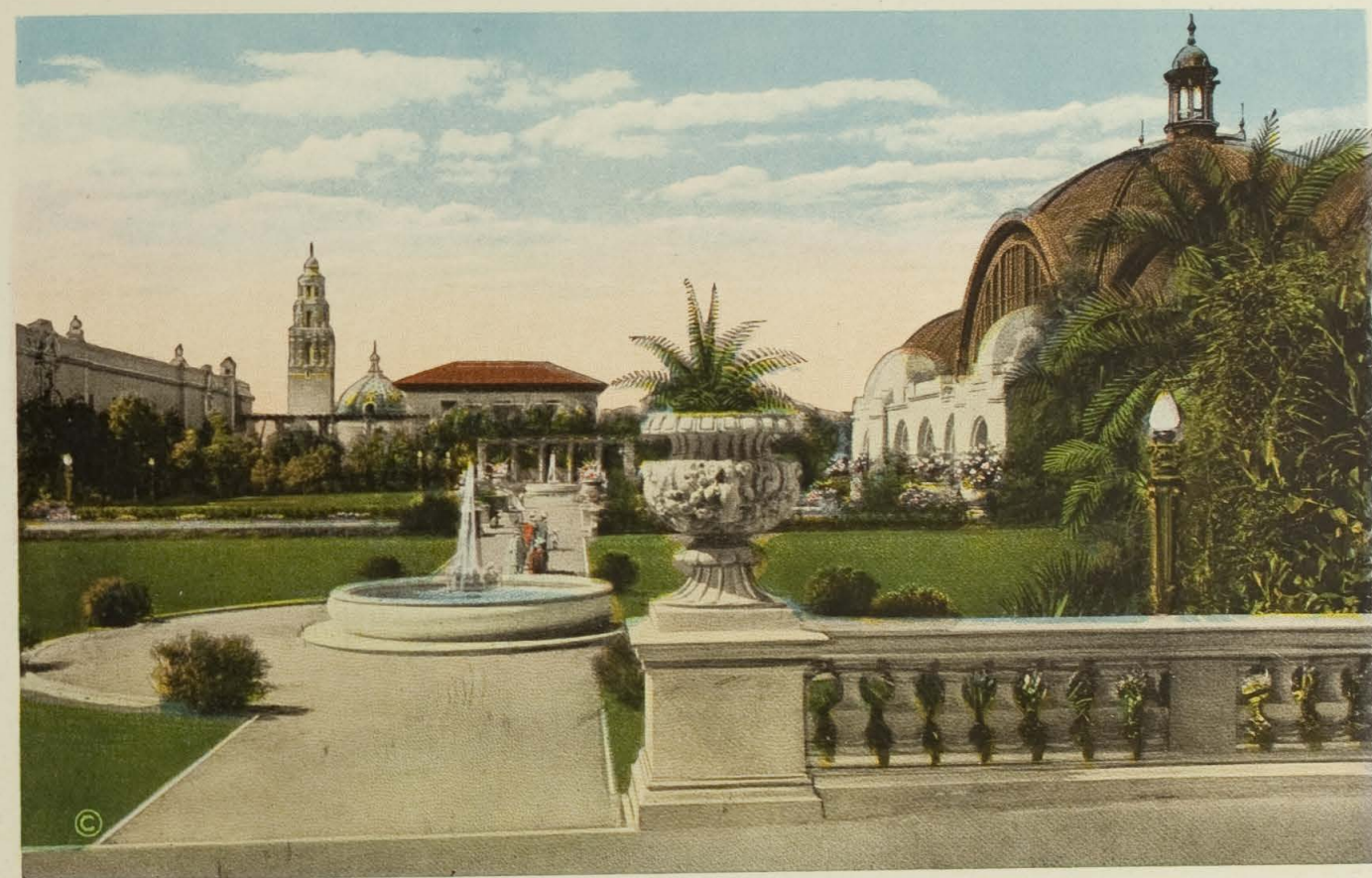
Looking North over Formal Gardens of Southern California
Counties Building.



Detail View of Lily Pond in front of Botanical Building.



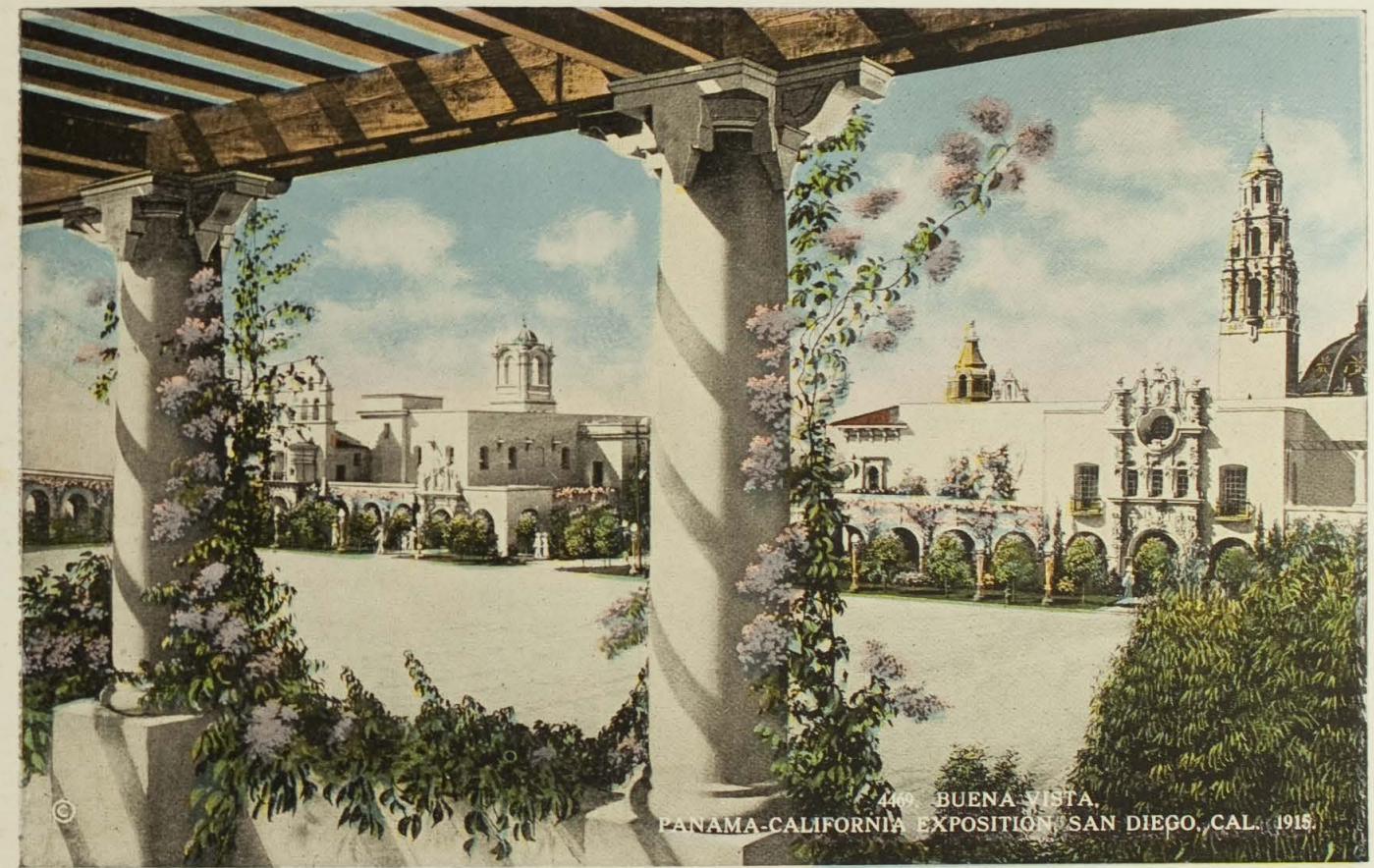
The West Porch of the Varied Industries Building, located at the Eastern End of the Botanical Court.



Botanical Court, showing Botanical Building at right and California Towers in background.



Arts and Crafts Building in foreground with California Towers
in background.



View across Plaza de Panama from Pergola on Home
Economy Building.



Front View of Southern California Counties Building, showing
Architectural detail.



4455. INTERIOR OF BOTANICAL BUILDING,
PANAMA-CALIFORNIA EXPOSITION, SAN DIEGO, CAL. 1915

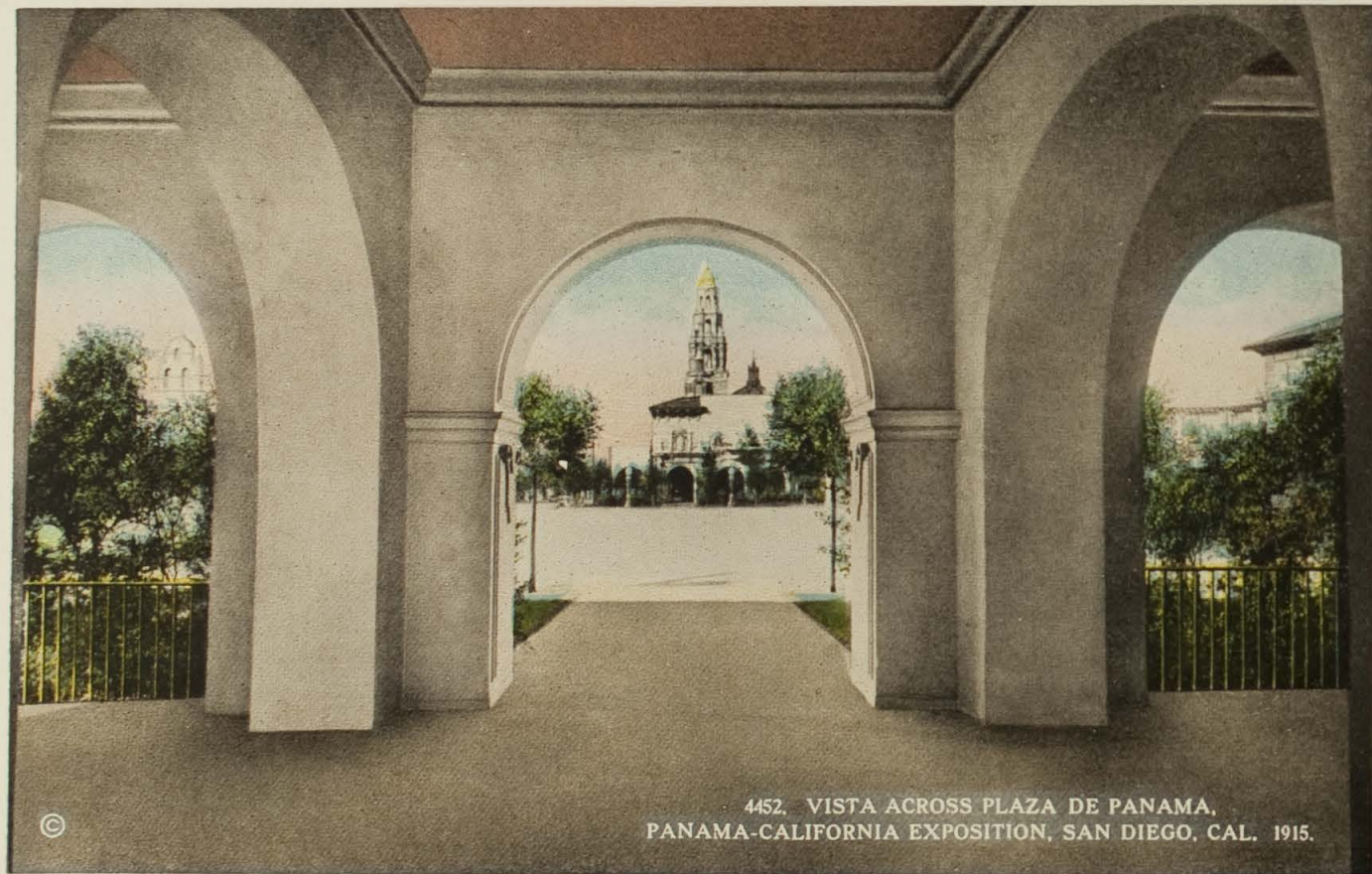
Interior of Botanical Building showing luxuriant growth of
Tropical Verdure.



Lily-Pond and Lagoon, seen from the top of the Botanical Building.

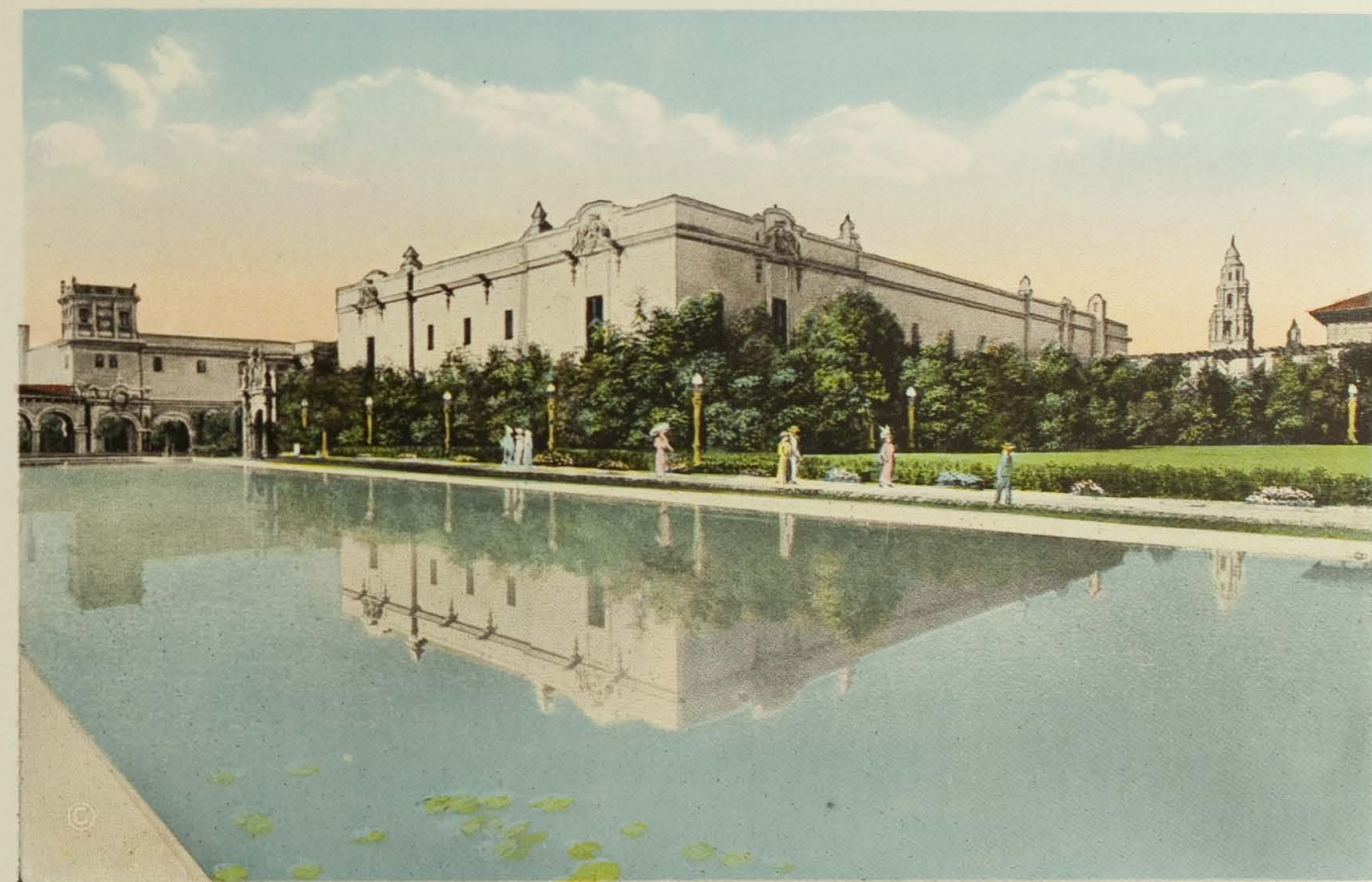


View in East Patio of Science and Education Building, showing Faun Fountain.



4452. VISTA ACROSS PLAZA DE PANAMA,
PANAMA-CALIFORNIA EXPOSITION, SAN DIEGO, CAL. 1915.

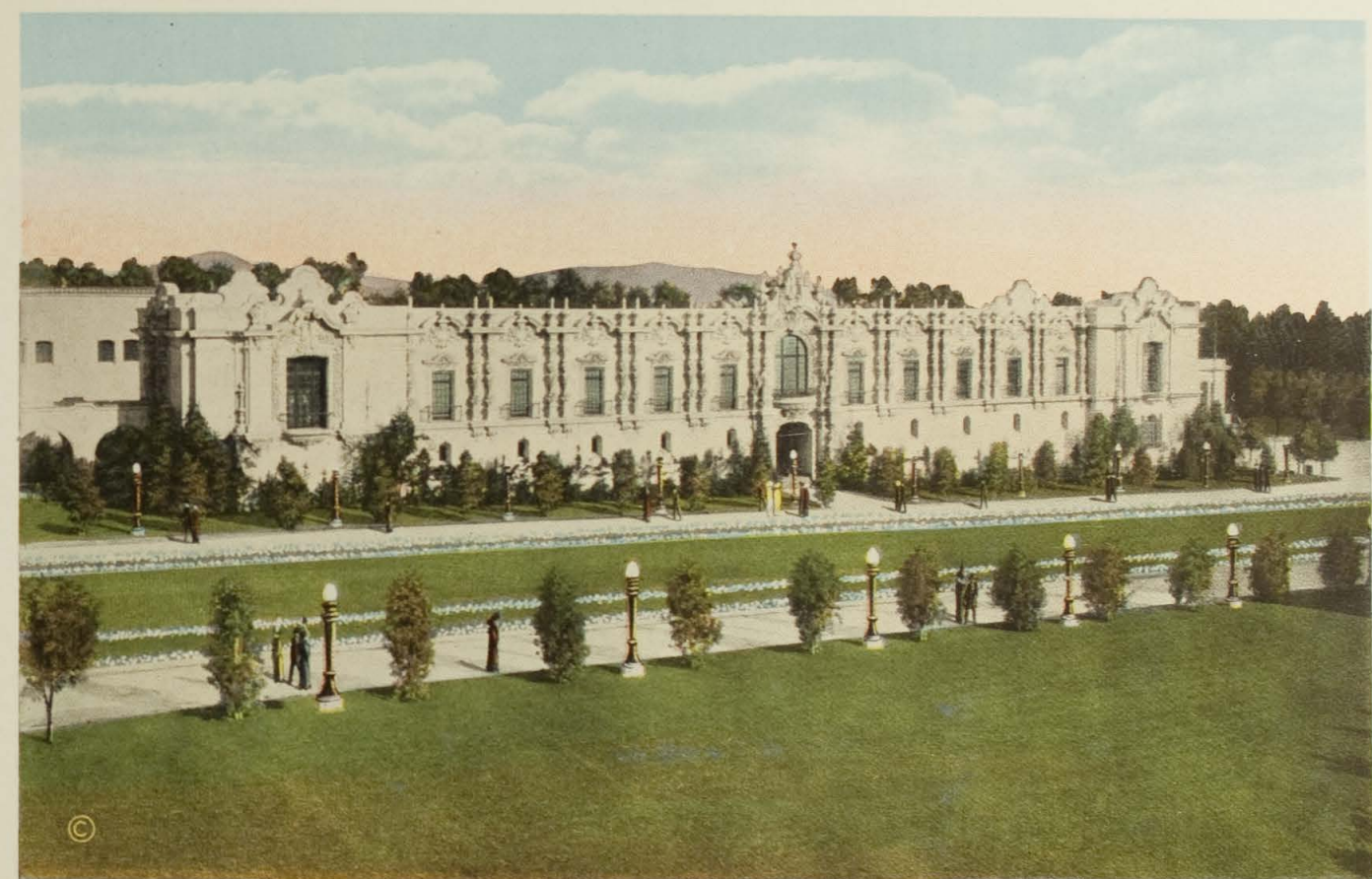
View West over Plaza de Panama from Foreign and Domestic
Arts Building.



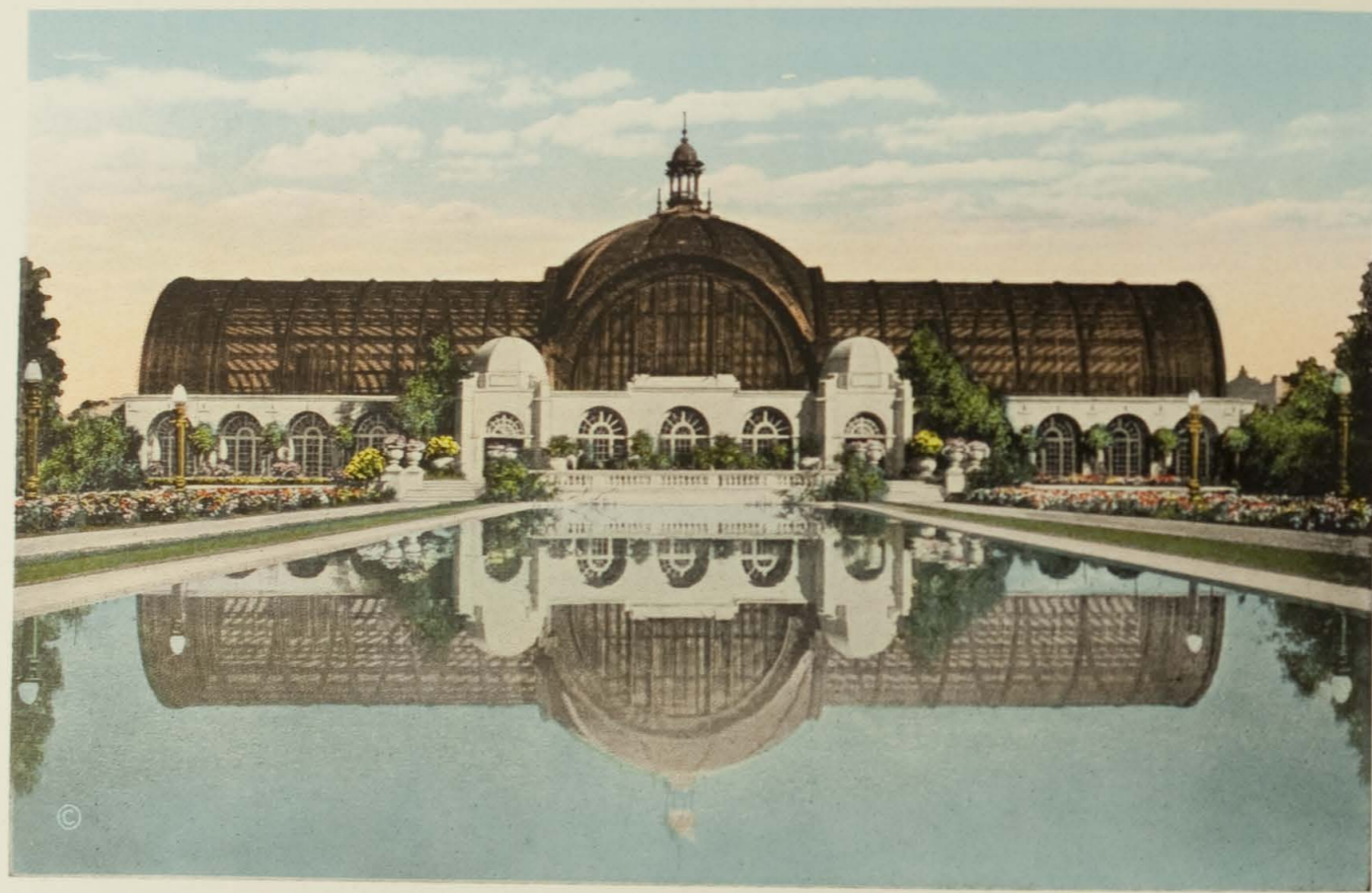
Reflections of the Home Economy Building in Large Lagoon.



Kern and Tulare Counties Building, San Juan Valley Building at left.



San Juan Valley Counties Building.



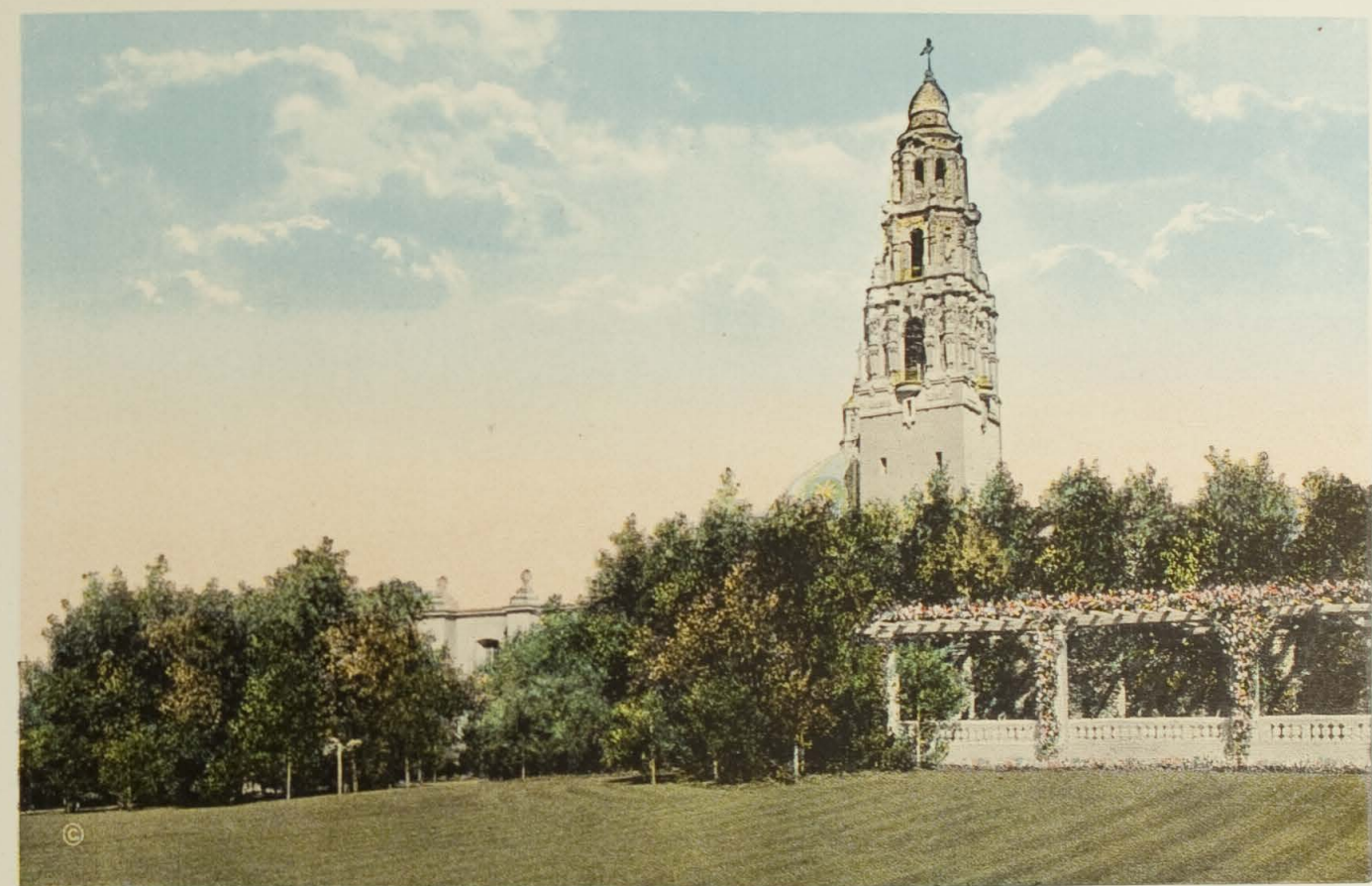
View of Botanical Building from South end of Large Lagoon.



Looking West across Large Lagoon, showing Sacramento Valley Building and California Towers in background.



Cabrillo Bridge, showing California and Ethnological Buildings from Canyon.



Upper Pergola, from South Lawn, showing California Building Towers in background.



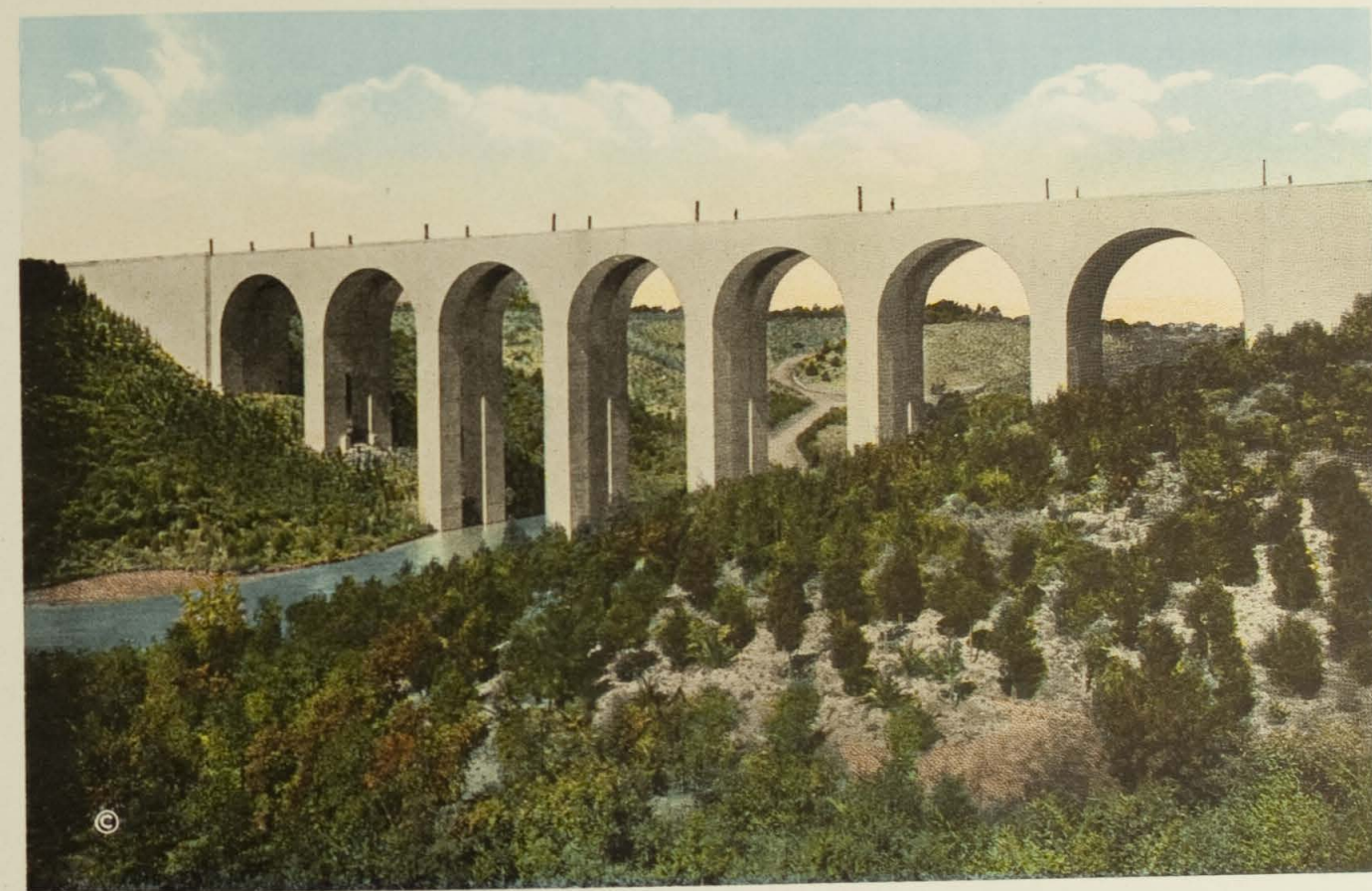
Building erected by Seven Southern Counties of California.



Prado side of Science and Education Building, showing Home Economy Building in distance.



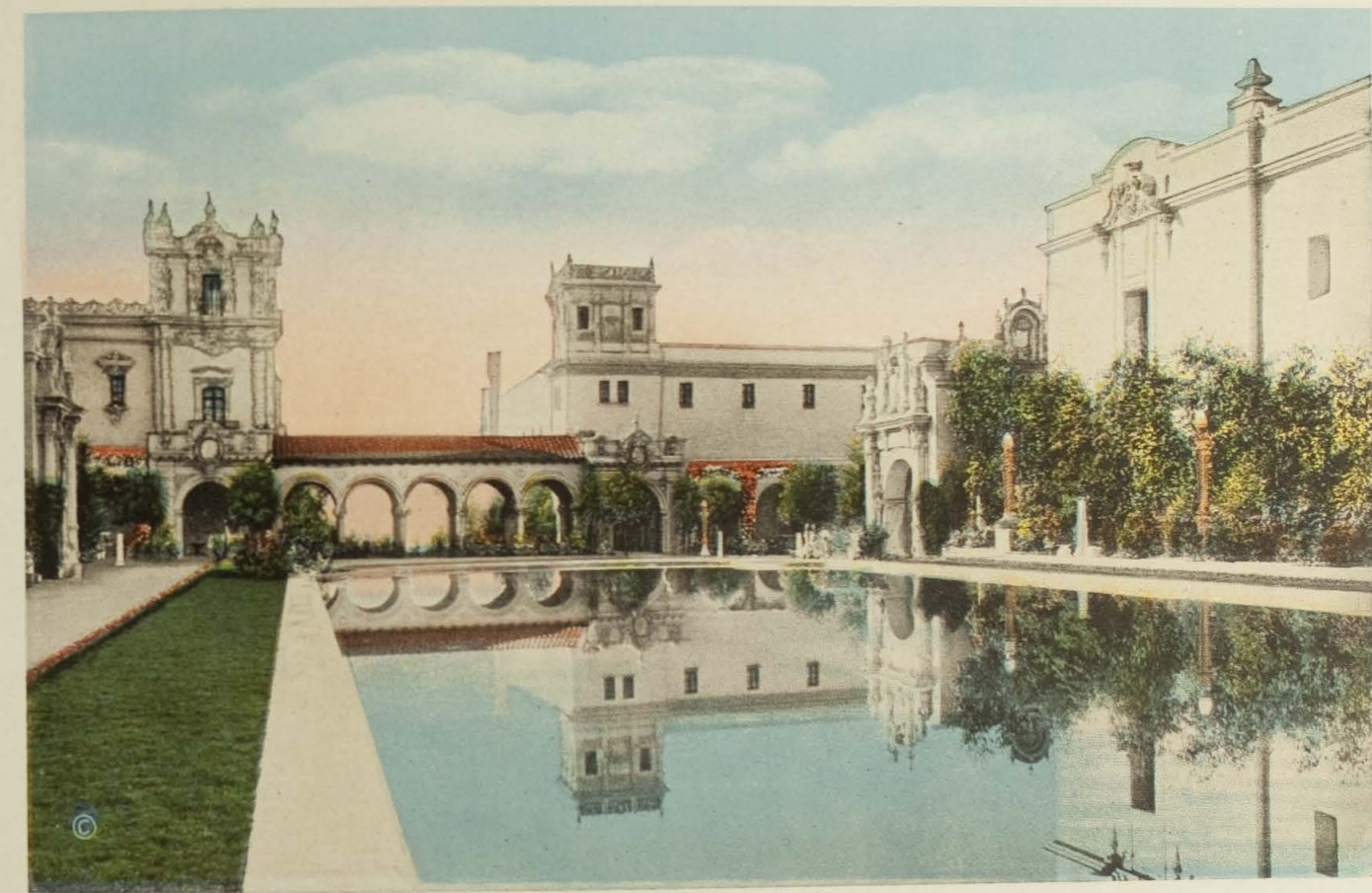
Plaza de Panama, side of Arts and Crafts Building, California Towers
in background.



Puente Cabrillo, spanning Cabrillo Canyon and the Main Entrance
to the Exposition.



Vista along East Side of Varied Industries Building, looking North.



View South over Large Lagoon showing Reflections of Commerce and Industries and Domestic and Foreign Arts Buildings.



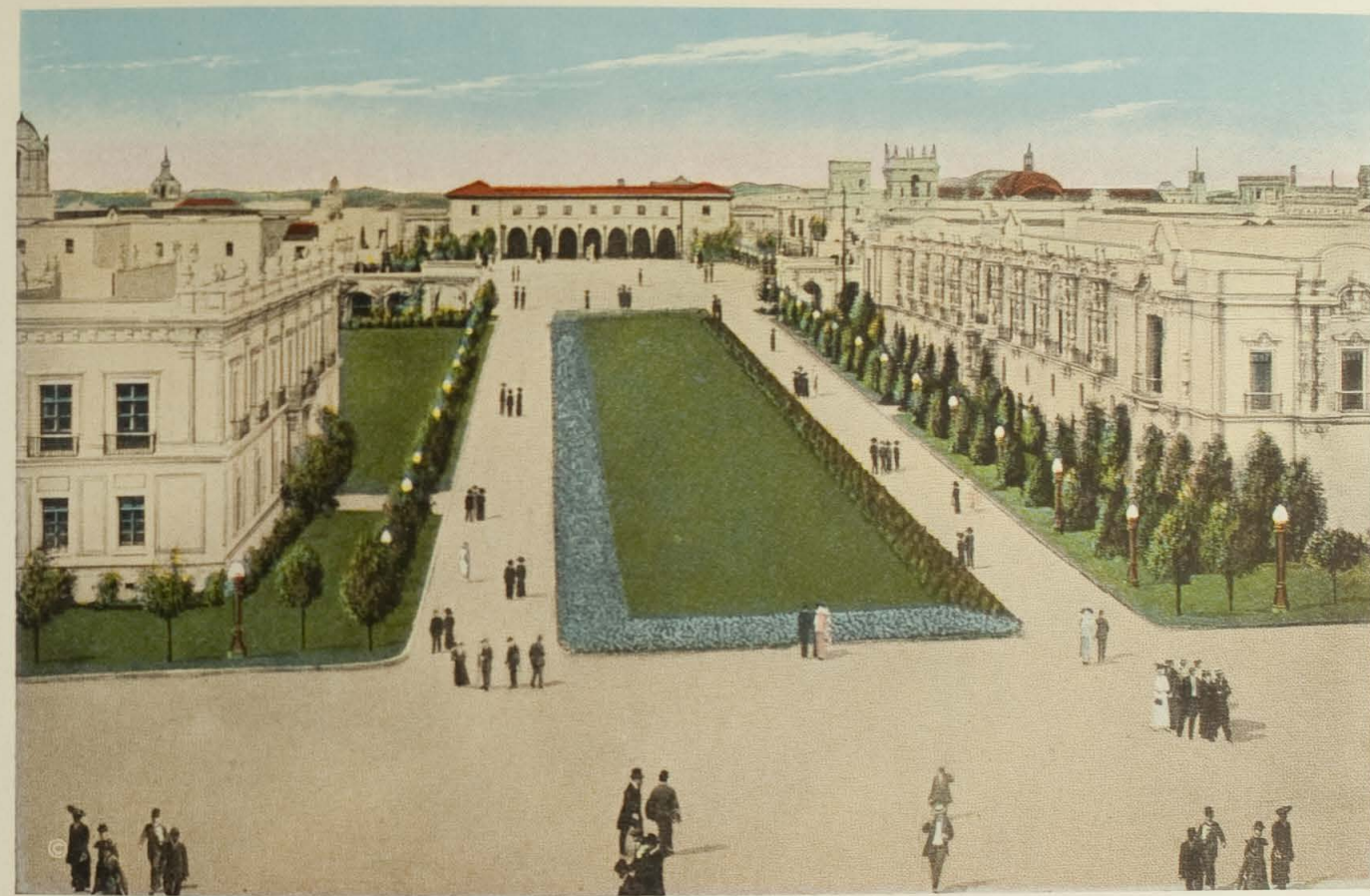
Plaza de Panama Entrance to Science and Education Building.



East Entrance to Commerce and Industries Building Colonnade



Commerce and Industries Building, from the Northwest Corner.

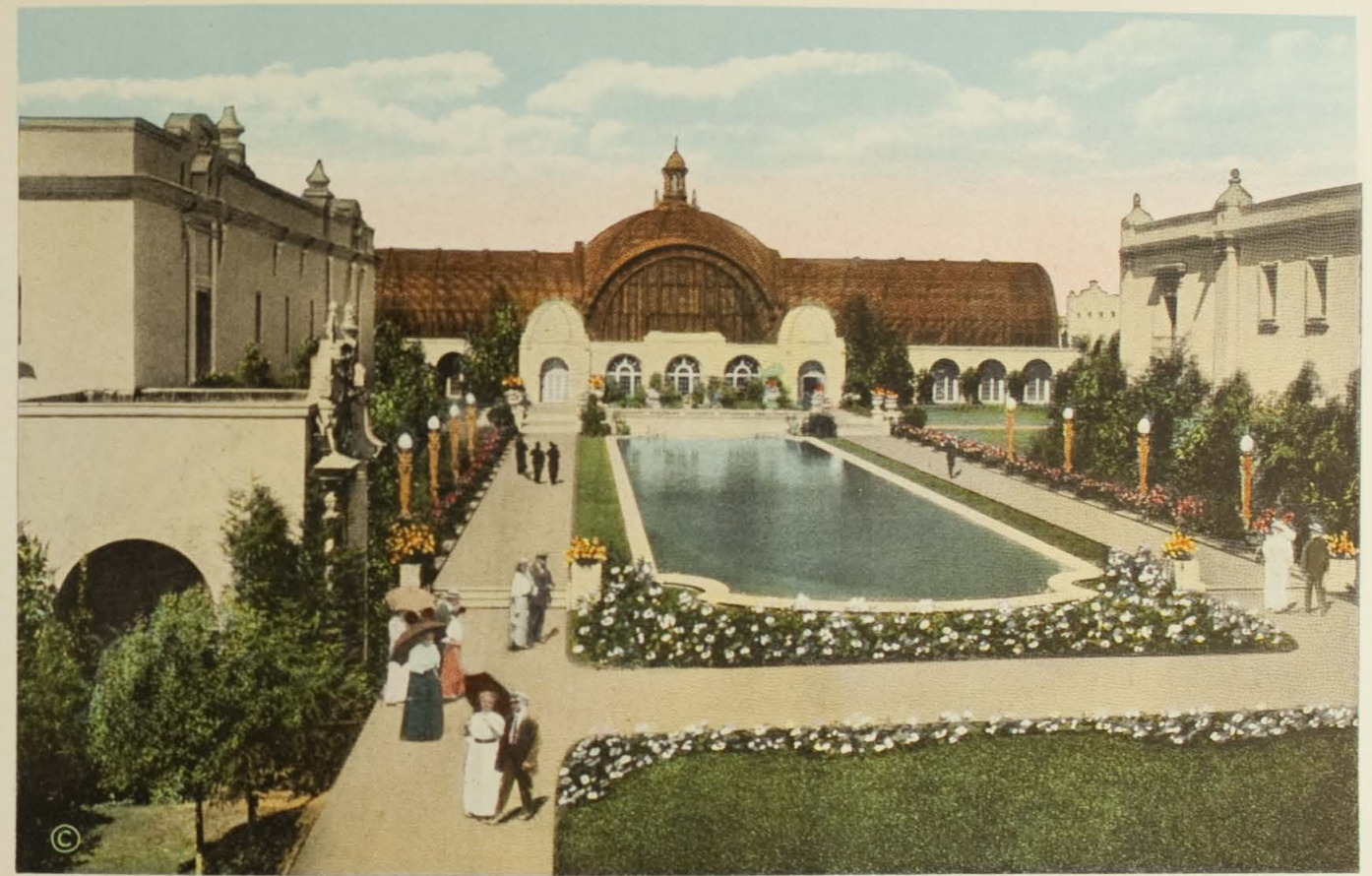


View North over Plaza de Panama from Spreckels
Pipe Organ Building.

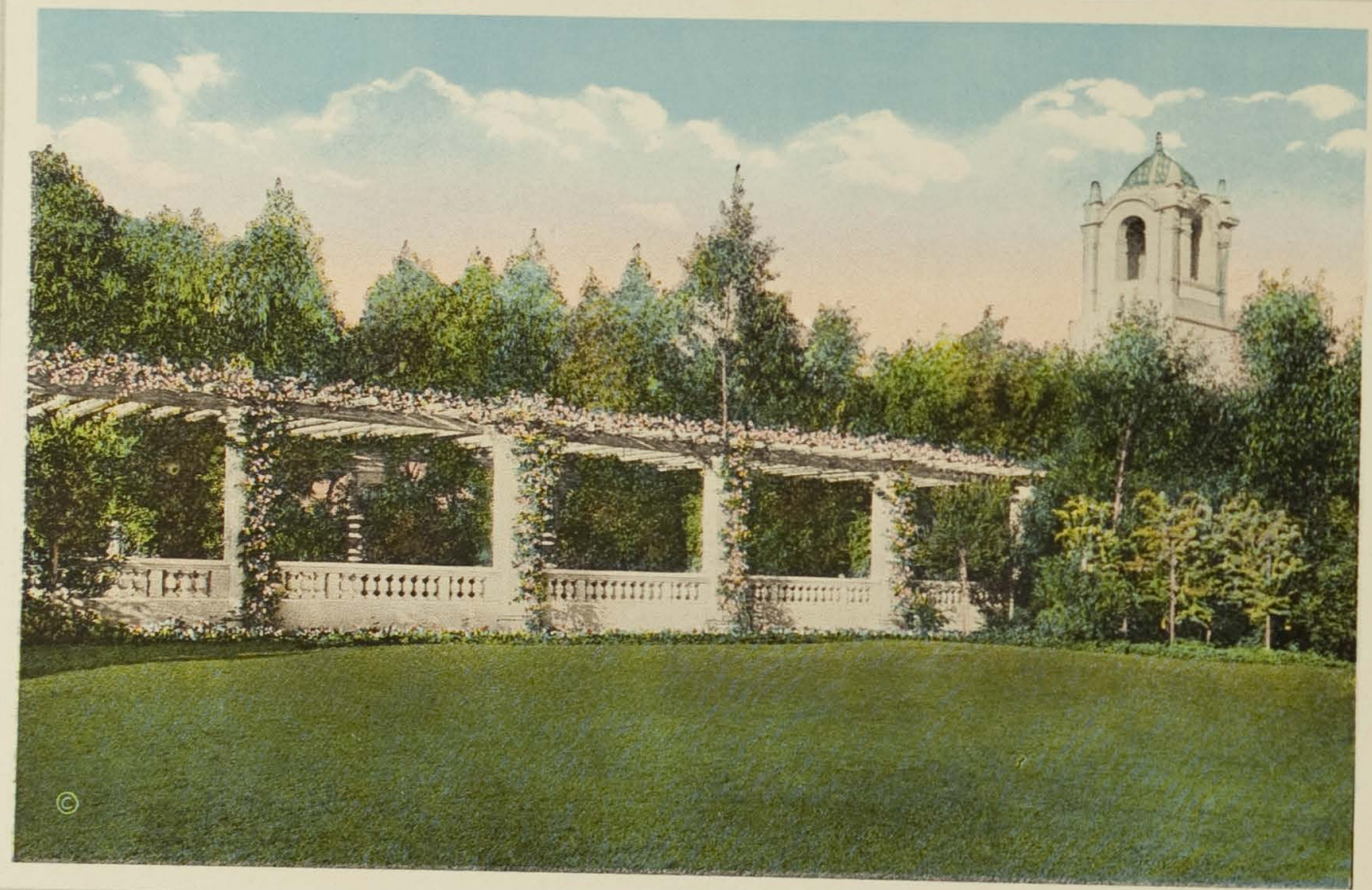


4457. THREE ARCHES AND THREE TOWERS,
PANAMA-CALIFORNIA EXPOSITION, SAN DIEGO, CAL. 1915.

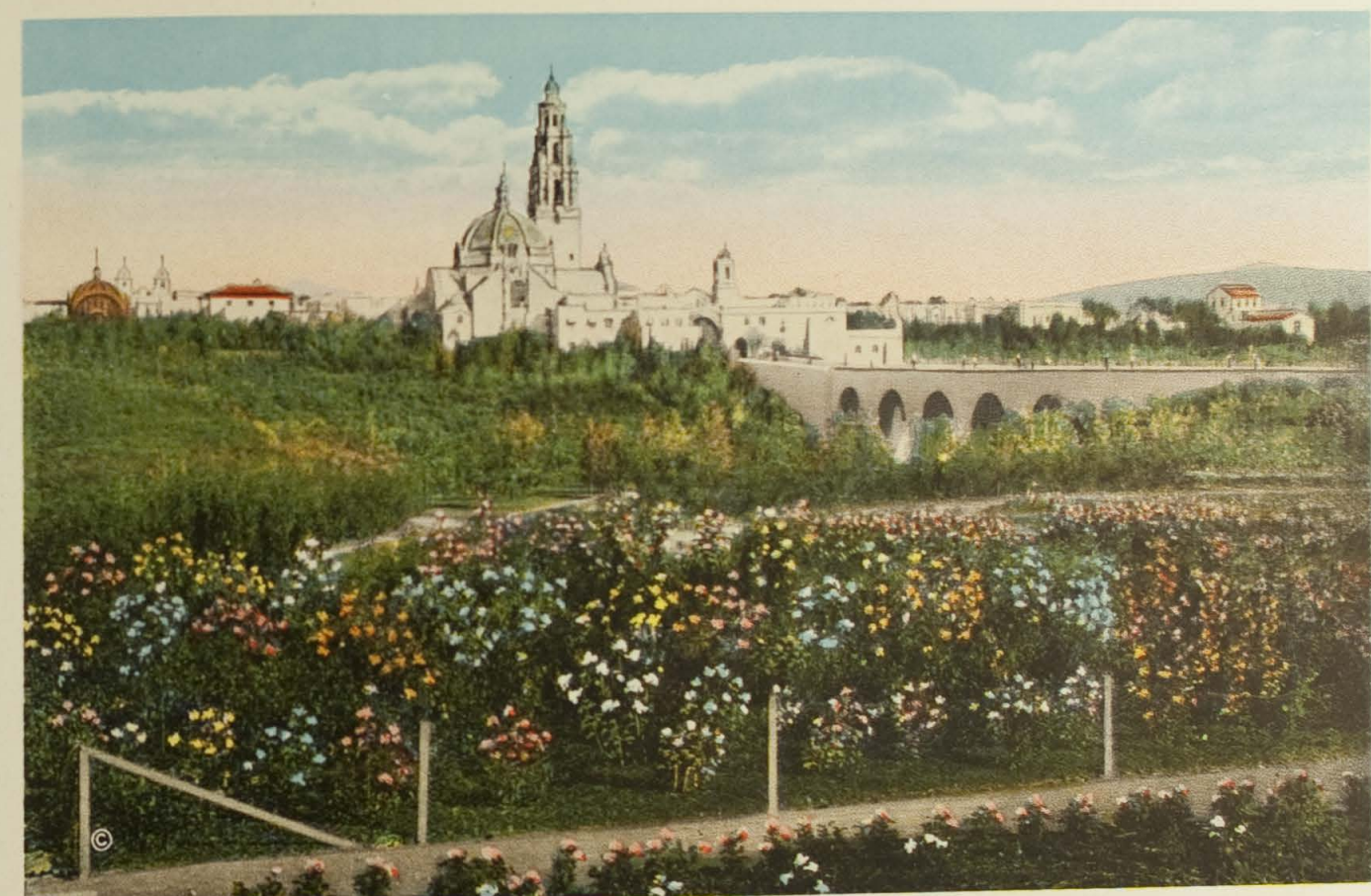
California, Arts and Crafts and Science and Education Towers, seen
through Three Arches.



Large Lagoon, showing Botanical Building in the background.



Upper Pergola and Arts and Crafts Tower from the South Lawn.



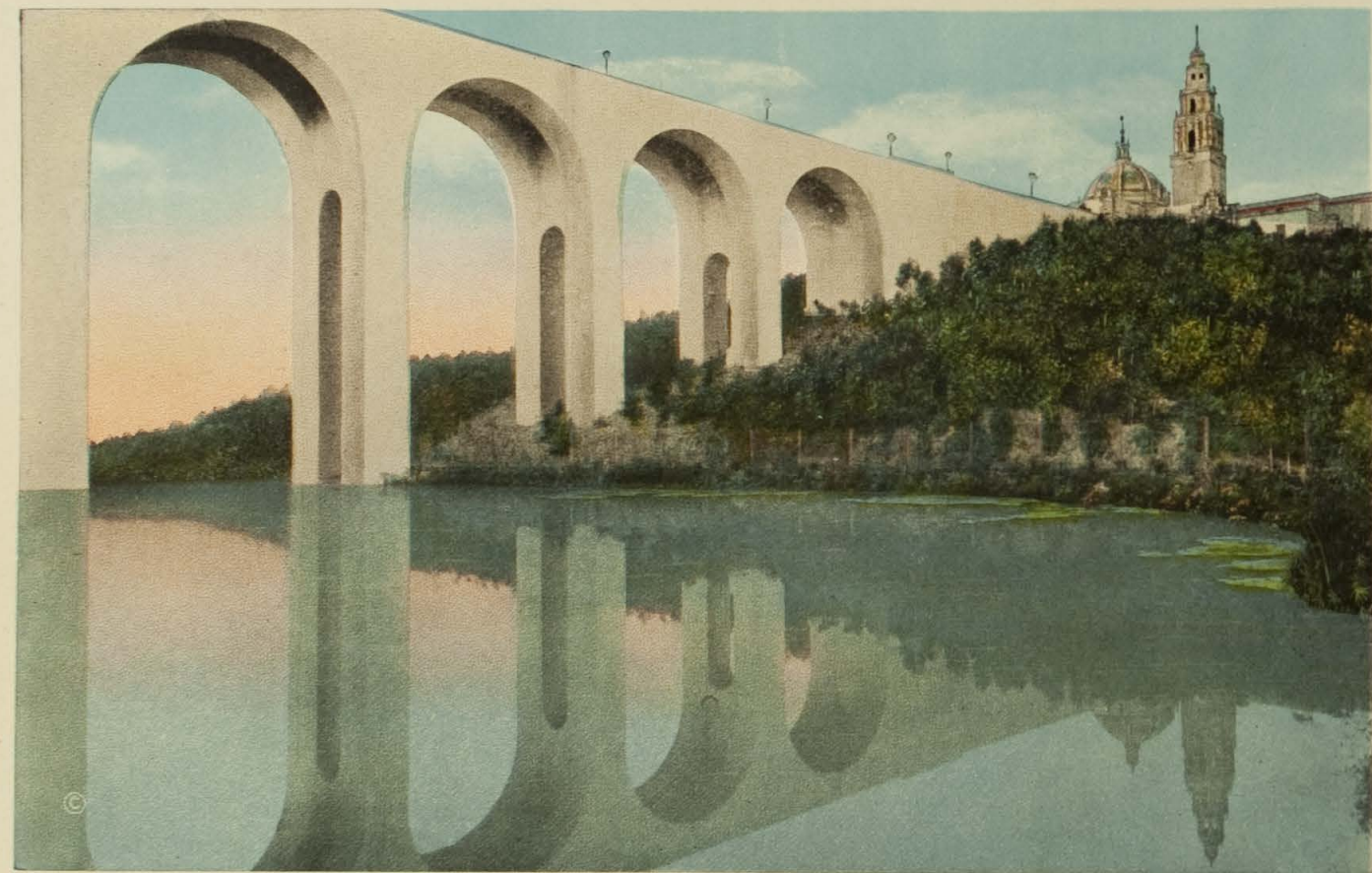
General View of Exposition from Rose Garden in Balboa Park.



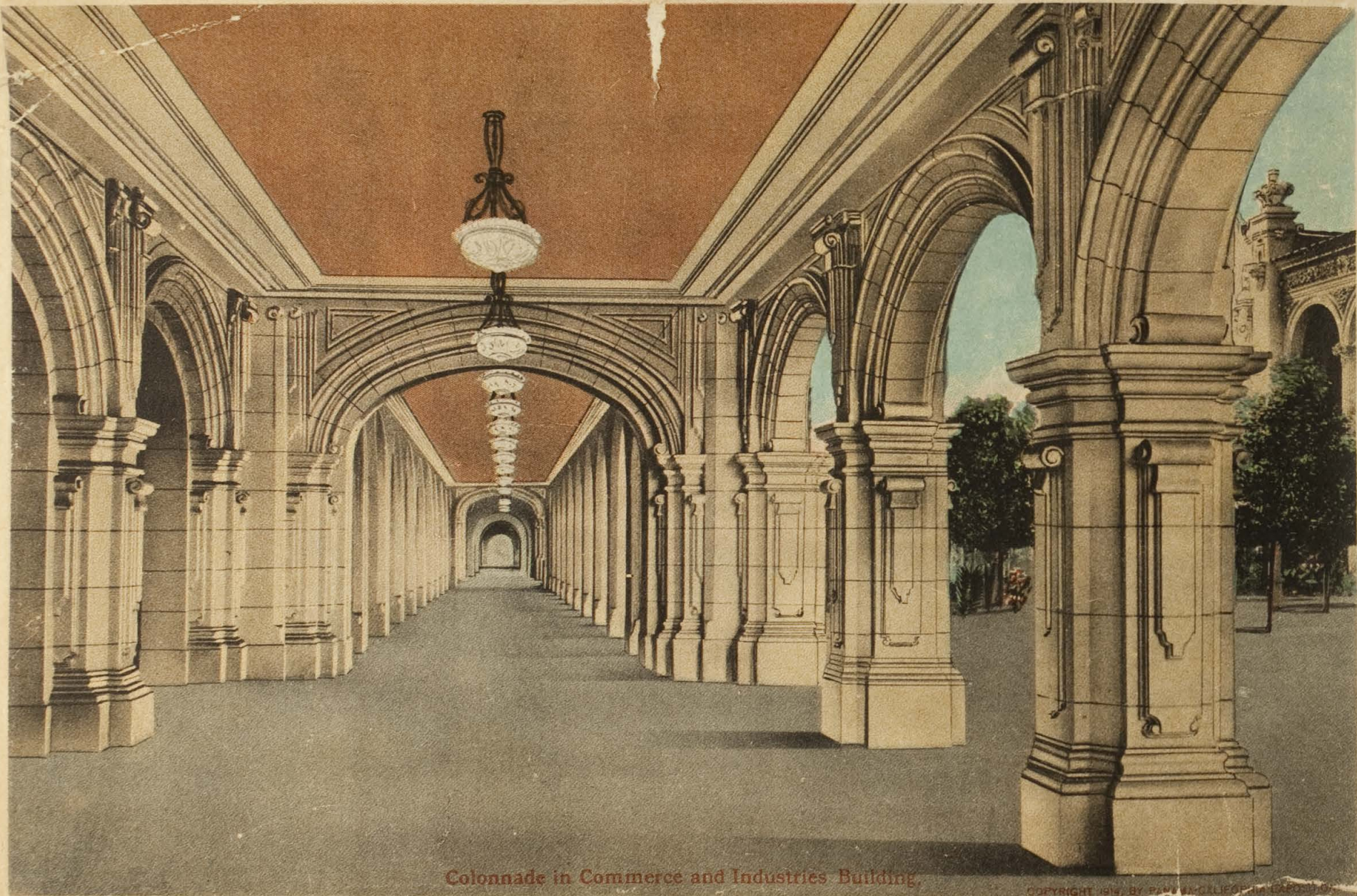
General View of West Entrance from Puente Cabrillo.



California Building, as seen from the North.



Cabrillo Bridge and California Building, from the Lake Shore.



Colonnade in Commerce and Industries Building.

MADE BY CURT TEICH & CO., CHICAGO.

COPYRIGHT 1914 BY PAUL W. HOLLIFER IN LONDON